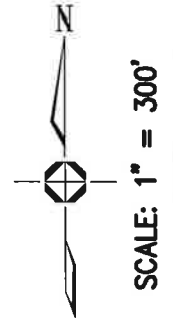


ILIFF COMMONS METRO DISTRICT NO. 3 (RESTRUCTURE)
 LGID NO. 65669
 SHEET 3 OF 4

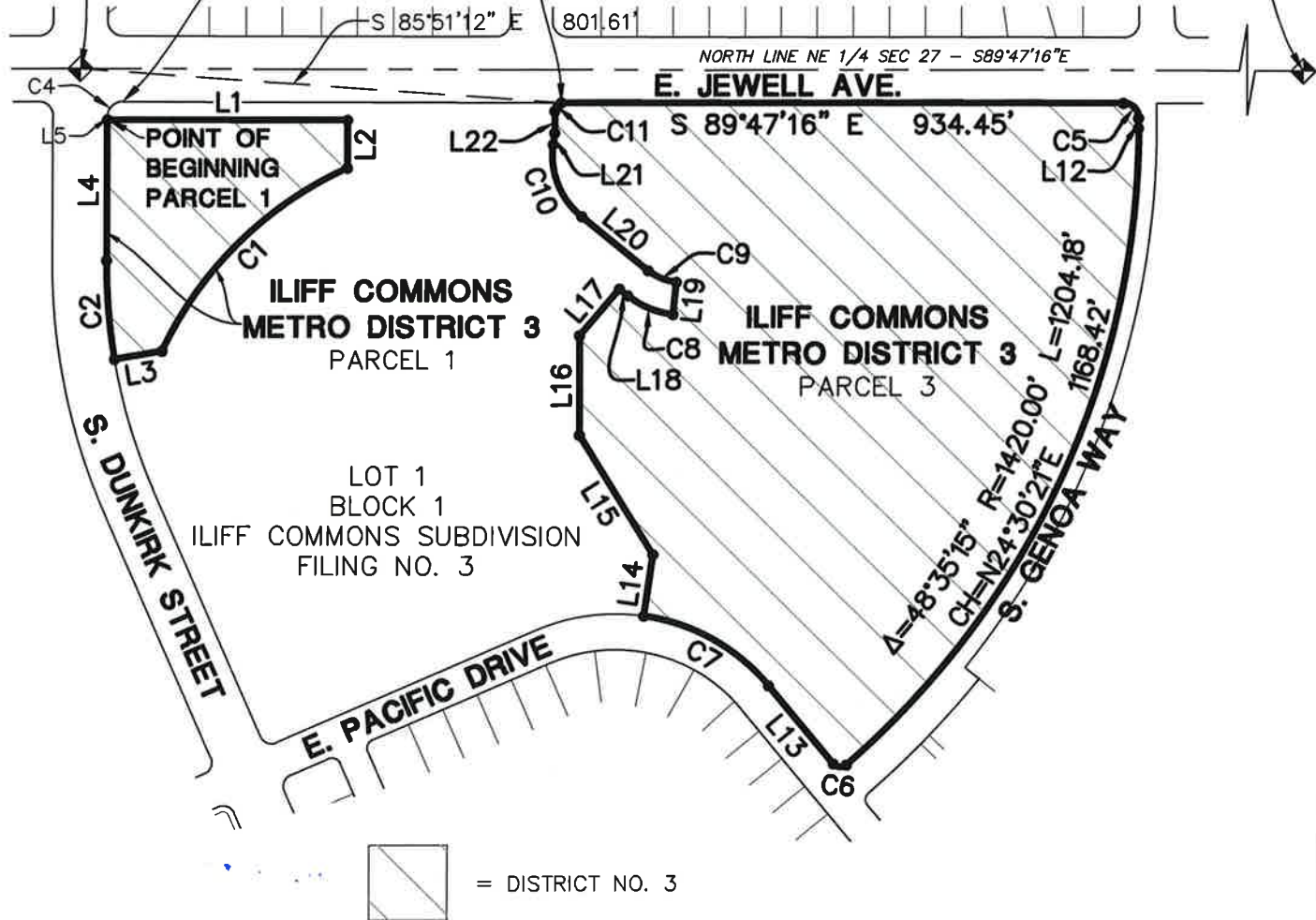


**POINT OF COMMENCING
 PARCEL 3**
 N. 1/4 COR. SEC 27
 3" BRASS CAP IN RANGEBOX
 PLS 16419, 1988

**POINT OF COMMENCING
 PARCEL 1**

**POINT OF BEGINNING
 PARCEL 3**

N.E. COR. SEC 27
 3" BRASS CAP IN RANGEBOX
 PLS 23527, 1988



LOT 1
 BLOCK 1
 ILIFF COMMONS SUBDIVISION
 FILING NO. 3

= DISTRICT NO. 3

NOTE:

- Denotes Change of Direction Only. This exhibit does not represent a monumented survey. It is intended only to depict the attached legal description.



7442 South Tucson Way, Suite 190-A, Centennial, CO 80112 ph:303.708.0500 fx:303.708.0400 manhard.com
 Civil Engineers • Surveyors • Water Resource Engineers • Water & Wastewater Engineers
 Construction Managers • Environmental Scientists • Landscape Architects • Planners